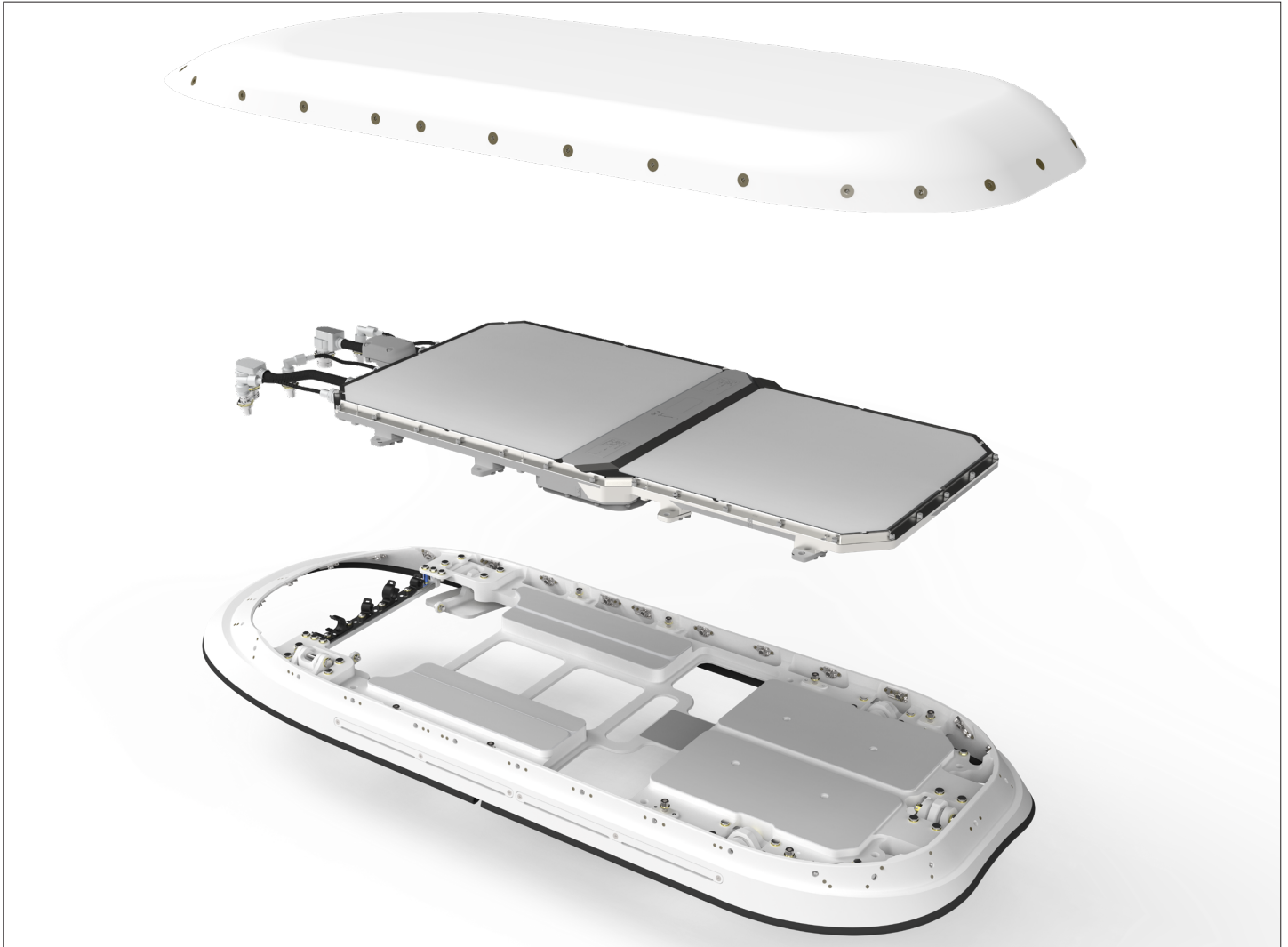


## Plane Simple ESA OAE Installation Package



*Exploded View of Plane Simple ESA OAE*

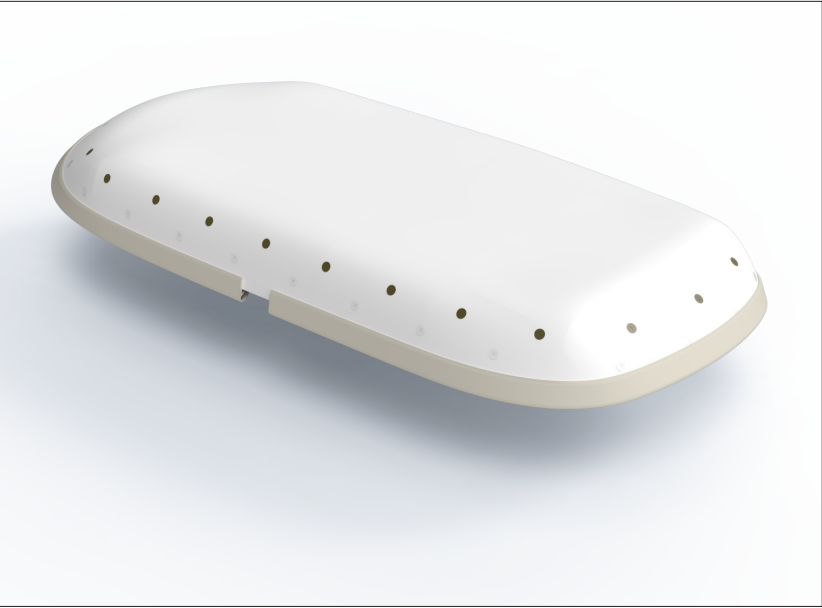
### INTRODUCTION

In partnership with Gogo, we offer a complete solution for installation of the Gilat ESR2030 Ku SATCOM antenna terminal using the OneWeb LEO network. Our compact adapter plate leverages our extensive experience with SATCOM installations and fulfills the need for standardized, compact installations while providing thermal management for on-ground operation. The shaping provides for low-profile installation along with aerodynamic shaping for best-in-class performance. Installation packages are available for business jet fleets, regional jets, VVIP, and commercial airframes. This package can be easily adapted to special mission applications.

# Plane Simple

ESA OAE Installation Package

FEATURES	BENEFITS
Minimized Profile	<ul style="list-style-type: none"><li>• Reduced size of installation</li><li>• Improved aerodynamic performance &amp; lower drag vs. competitive product shapes</li></ul>
Single-Piece Adapter Plate	<ul style="list-style-type: none"><li>• Adaptable for multiple payloads &amp; fuselage diameters</li><li>• Provides efficient thermal transfer from antenna into subassembly</li><li>• Provides a thermal mass for on ground operation</li><li>• Fittings (adapter side) integrated directly into the adapter plate, reducing part count &amp; weight</li></ul>
Simplified Slip-Bearing Design	<ul style="list-style-type: none"><li>• Provides releases to account for fuselage movement.</li><li>• Provides a minimum of two fittings to constrain each direction</li></ul>
Integrated Aluminum Skirt	<ul style="list-style-type: none"><li>• Provides efficient thermal path to the ambient environment to dissipate heat for on-ground operation</li><li>• Easily adaptable for a variety of airframe types</li></ul>
Fully Integrated Installation	<ul style="list-style-type: none"><li>• Reduced installation time</li><li>• Requires only standard hand tools</li><li>• Includes bulkhead feedthroughs for system interconnect to cabin</li></ul>



Installed View of Plane Simple ESA OAE

**Dimensions**

Length: 46"  
Width: 17.5"  
Height: 5"

**Weights**

Adapter Plate: 22 lbs.  
Radome: 14 lbs.  
OAE Harness: 2 lbs.  
Internal Provisions: 10 lbs.