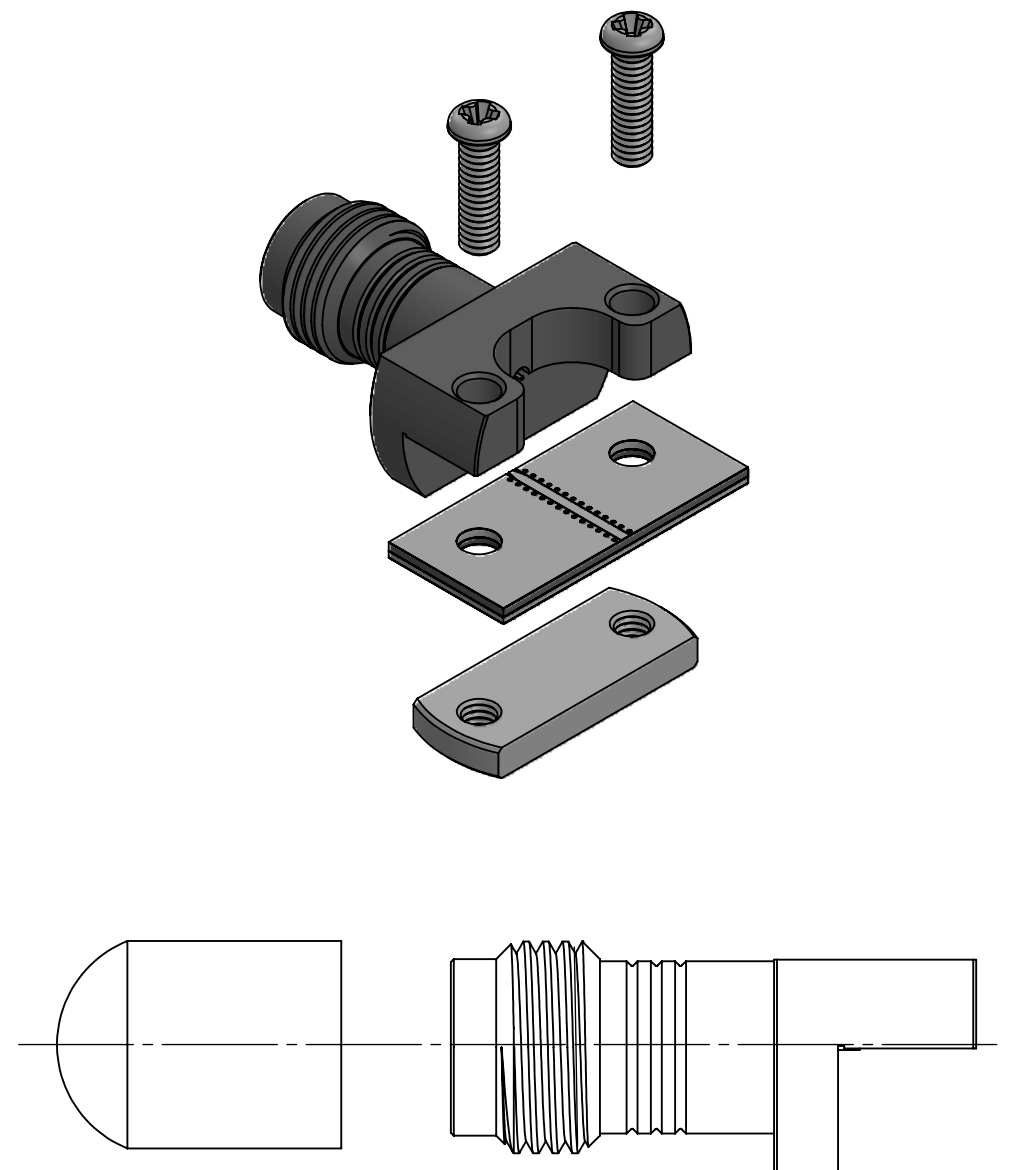
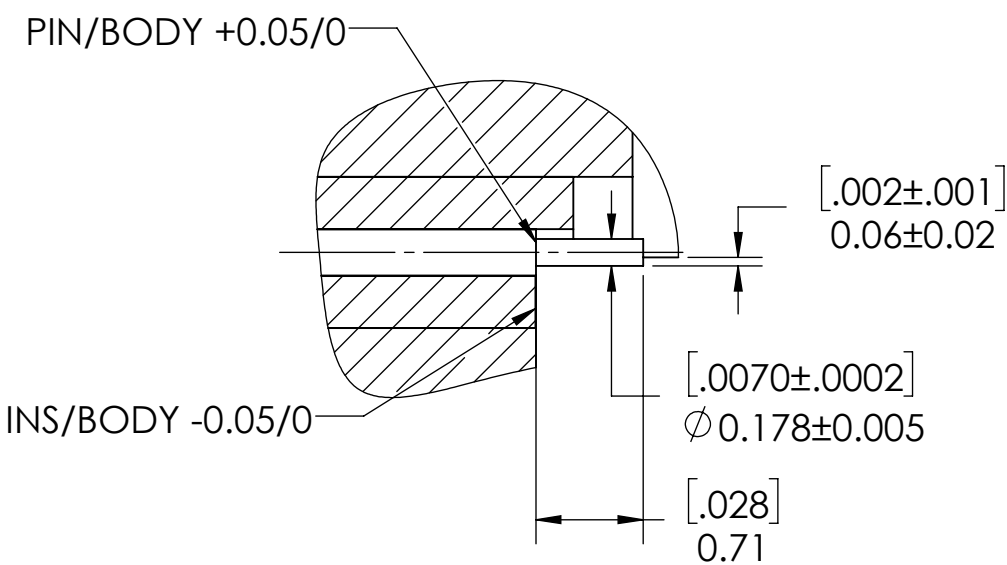
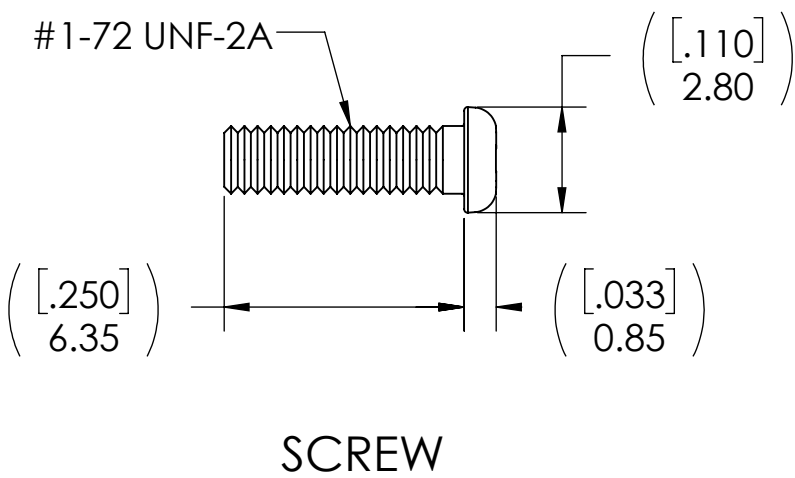
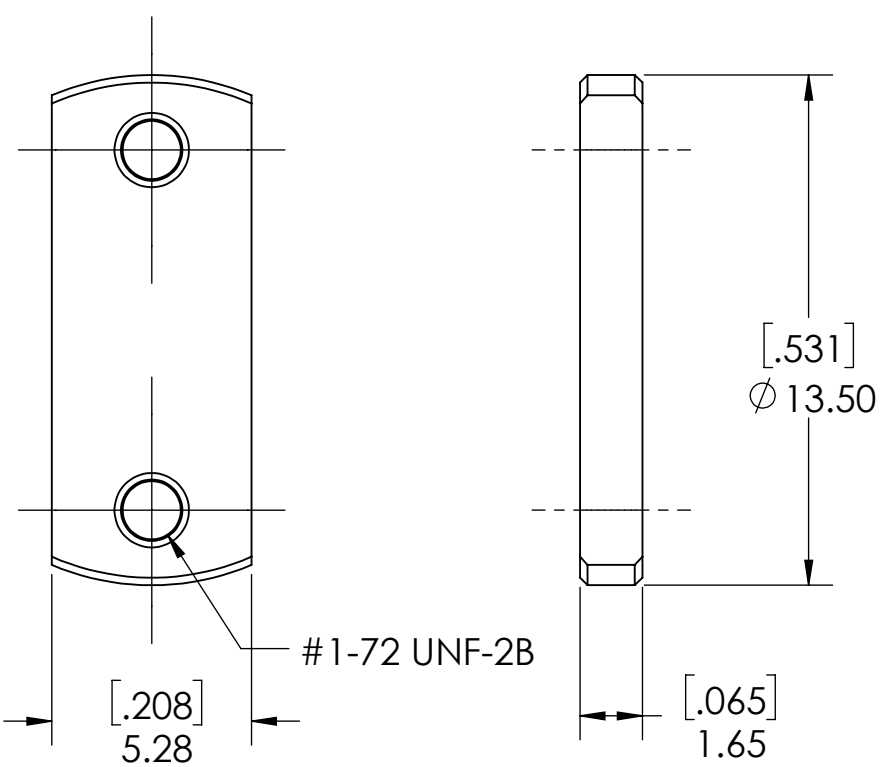
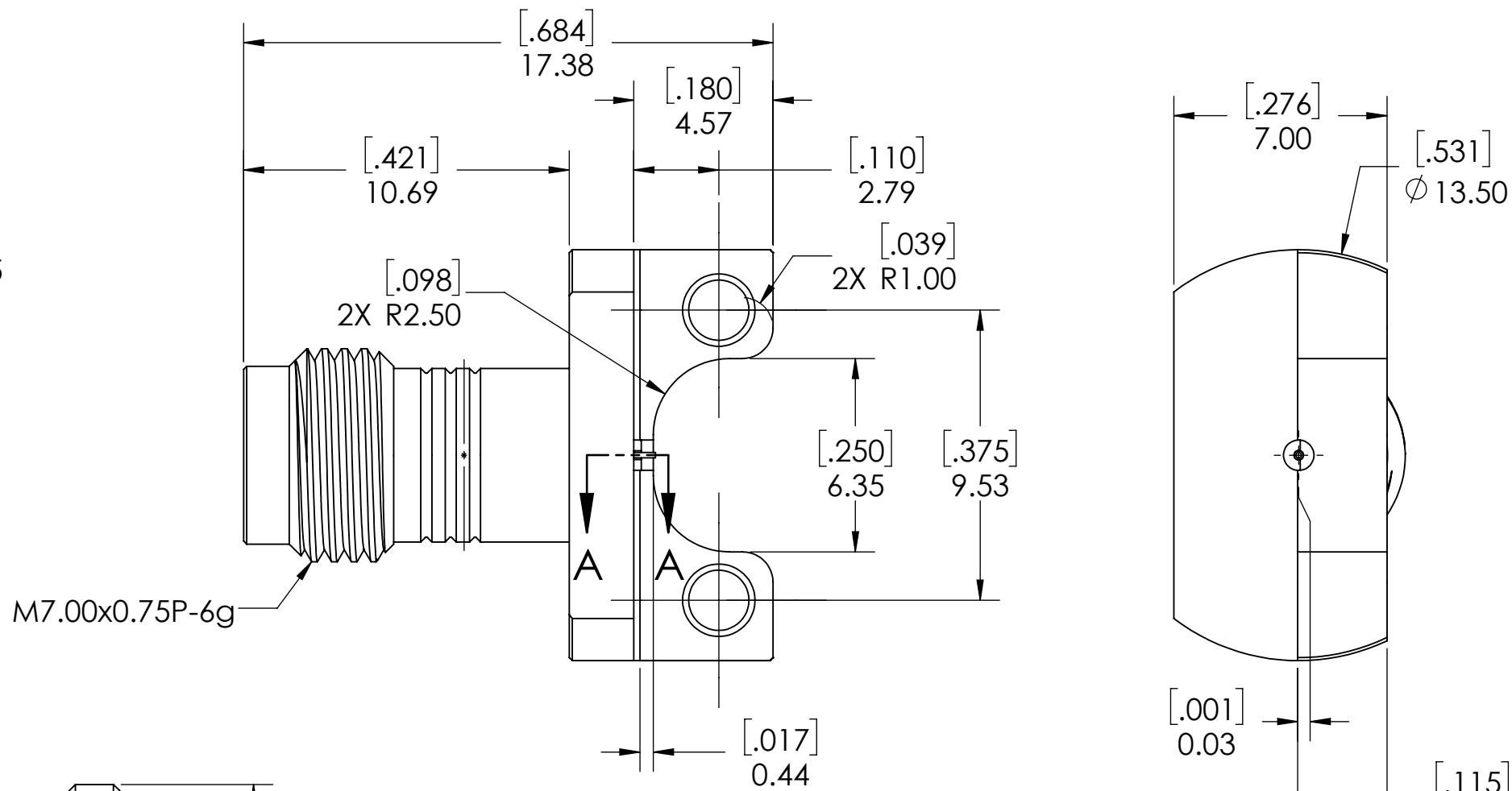
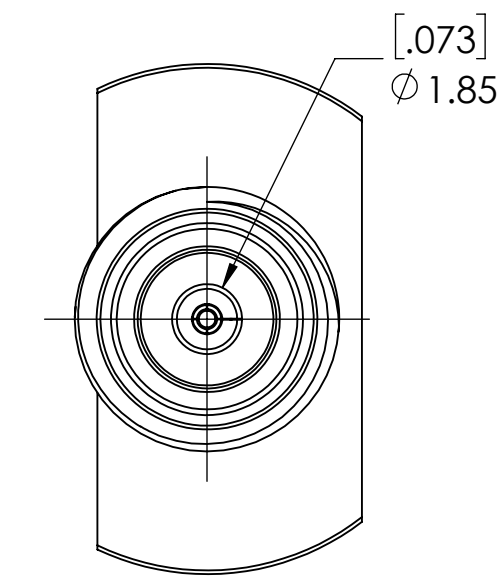




REVISIONS			
REV.	DESCRIPTION	DATE	APPROVED
-	INITIAL RELEASE	07/03/2018	MM
1	UPDATED PART NUMBER AND COLOR	10/26/2018	DL
2	ADDED SHEET 2 PCB DEFINITION	2/20/2019	PV
3	ADDED SECTION VIEW	3/7/2019	PV
4	REVISED MODEL	11/19/2019	PV
5	ADD MISSING DIM.	6/24/2020	FY
6	FOOT PRINT UPDATE	1/12/2021	FY
7	ADD DIMENSION 0.06±0.02	9/3/2021	FY
8	REVISED TOLERANCE IN SECTION A-A VIEW	9/8/2021	JZ
9	ADD MOUNTING SCREWS INFO TO TABLE	9/15/2021	JZ



LOCKING BLOCK

- NOTE(S):
- These characteristics are typical and for reference.
 - See sheet 2 for PCB definition.

SECTION A-A
SCALE 20 : 1

PROTECTION CAP

MATERIAL(S) :

Body: Stainless Steel
 Center Conductor: Beryllium Copper
 Insulator: Insulator 1: PCTFE, white
 Insulator 2: PTFE, white
 RoHS Compliant
 Protective Cap: Soft PVC
 Color: Green

Mounting Screws: Stainless Steel

ELECTRICAL(S) :

Impedance: 50 Ohms Nominal
 Frequency Range: DC to 65 GHz
 VSWR: 1.3:1 max at 65 GHz
 Working Voltage: 400 Vrms max @ Sea Level
 Dielectric Withstand Voltage: 500 Vrms max.
 Insulation Resistance: 5000 Megaohms min.
 Contact Resistance:
 Initial:
 Center Contact: 1.5 Milliohms max
 Outer Contact: 0.8 Milliohms max

MECHANICAL(S) :

Mating Characteristics:
 Interface per MIL-STD-348
 Force to Engage & Disengage:
 Torque: 2 inch-pounds max
 Longitudinal Force: NA
 Connector Durability:
 500 Cycles min.
 Permeability: Less than 2.0 mu.
 Center Contact Retention:
 Axial Force: 6 pounds min.
 Radial Force: NA

ENVIRONMENTAL(S) :

Temperature Range: -55 °C to +120 °C
 Moisture Resistance:
 MIL-STD-202, Method 103, Test Condition B
 Corrosion:
 MIL-STD-202, Method 101, Test Condition B
 Vibration:
 MIL-STD-202, Method 204, Test Condition A
 Shock:
 MIL-STD-202, Method 213, Test Condition 1

FINISH(ES) :

Body: Passivated
 Center Conductor: Gold Plating
 Mounting Screws: Passivated

APPLICABLE CARLISLE IT DOCUMENTS

WORK STANDARD	PROD INSTRUC	ASSY INSTRUC
NA	NA	NA
-	-	-

NOTICE
 THIS DRAWING EMBODIES A CONFIDENTIAL PROPRIETARY DESIGN ORIGINATED BY CARLISLE INTERCONNECT TECHNOLOGIES & ALL DESIGN, MANUFACTURING, REPRODUCTION, USE & SALE RIGHTS REGARDING THE SAME ARE EXPRESSLY RESERVED. IT IS SUBMITTED UNDER A CONFIDENTIAL RELATIONSHIP FOR A SPECIFIED PURPOSE & THE RECIPIENT AGREES BY ACCEPTING THIS DRAWING NOT SUPPLY OR DISCLOSE ANY INFORMATION REGARDING IT TO ANY UNAUTHORIZED PERSON TO INCORPORATE IN OTHER PROJECTS ANY SPECIAL FEATURES PECULIAR TO THIS DESIGN. ALL PATENT RIGHTS HERETO ARE EXPRESSLY RESERVED BY CARLISLE INTERCONNECT TECHNOLOGIES, CERRITOS, CALIFORNIA 90703

TOLERANCES AND NOTES

EXCEPT AS NOTED
 THIRD ANGLE PROJECTION
 SCALE 5:1
 DIMENSIONS ARE IN [INCHES] MM
 ANGLES ±2°
 .XX DECIMALS ±.063
 .XXX DECIMALS ±.01

APPROVAL INITIALS DATE

DRAWN BY	MM	07.03.18
CHECKED BY	KM	07.03.18
DESIGN ENG		
APPR BY		

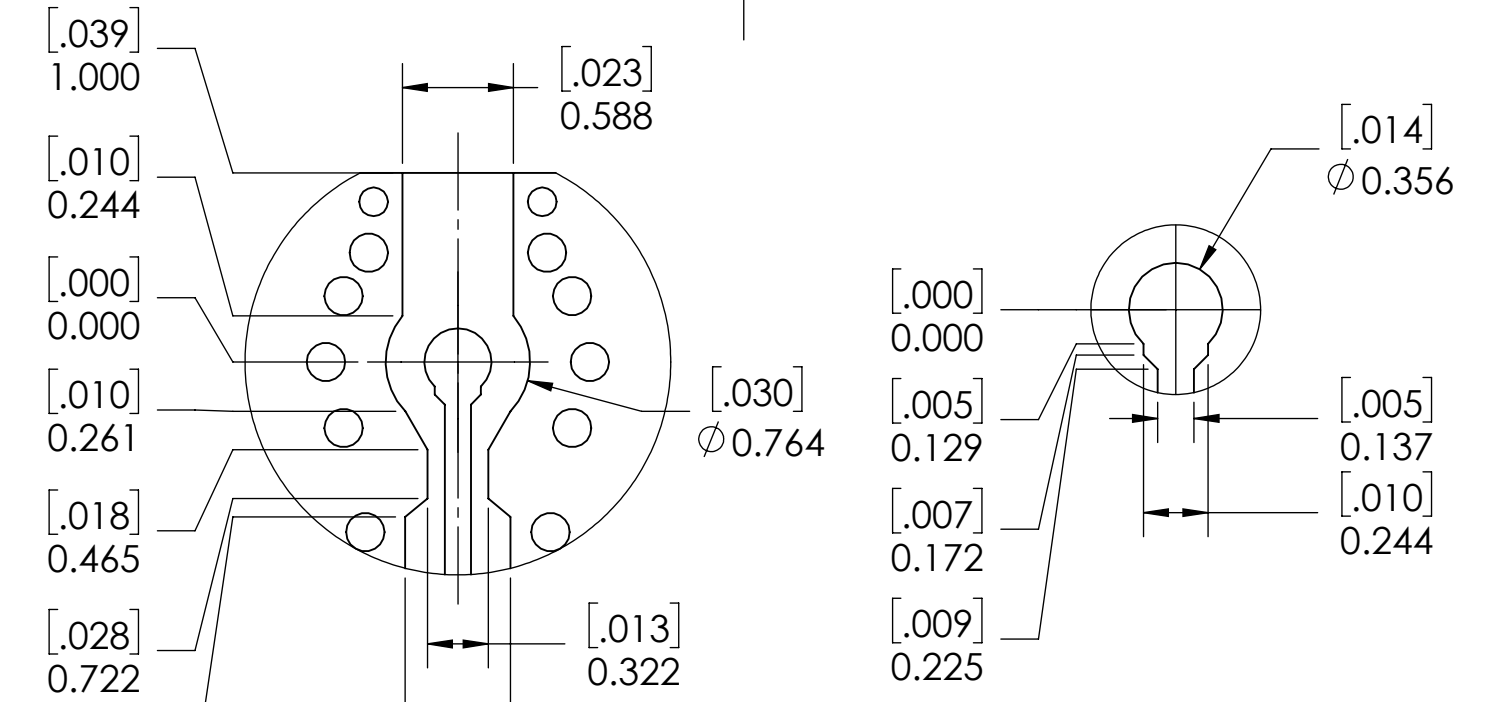
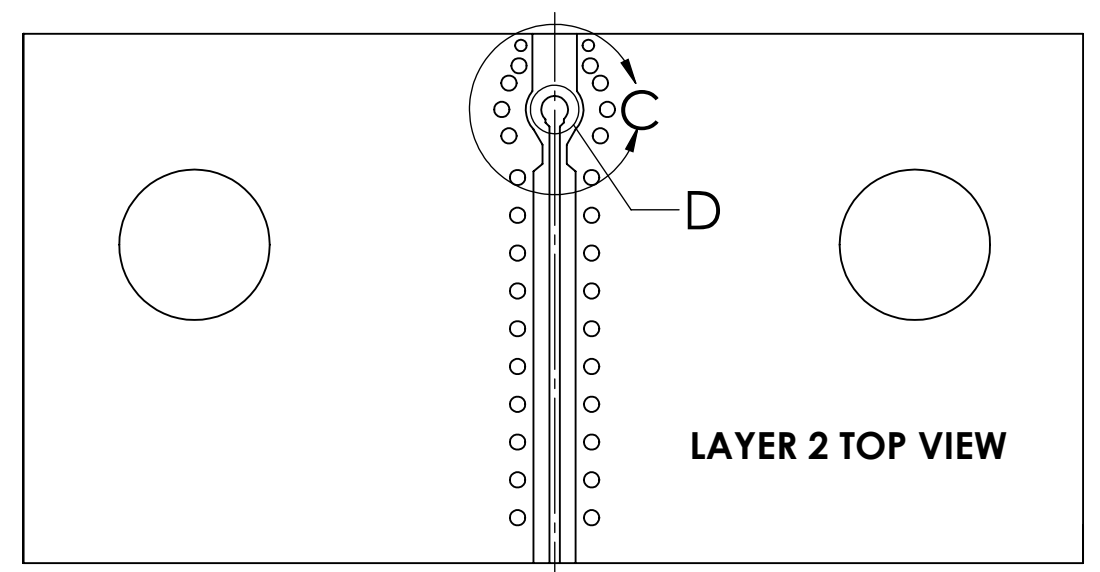
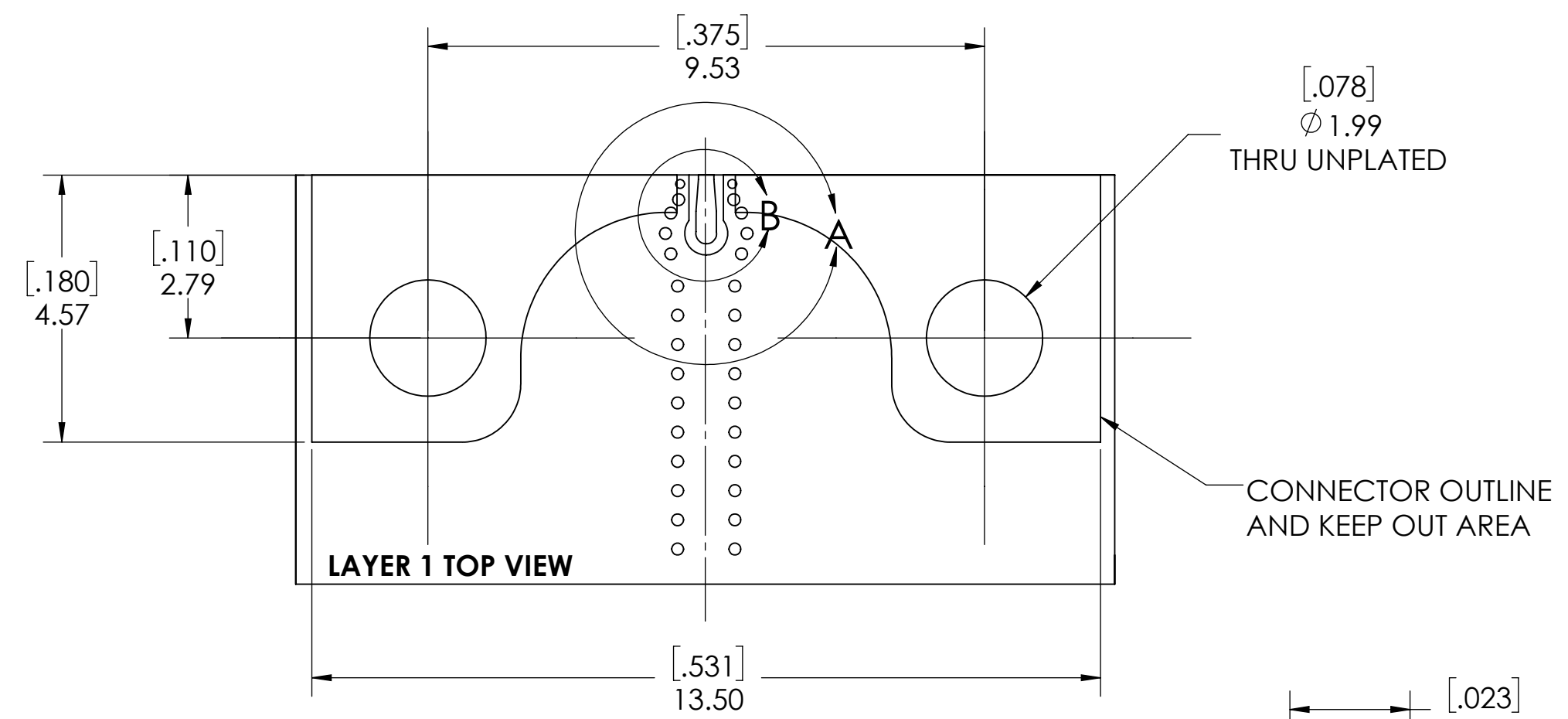
TITLE: 1.85mm STRAIGHT JACK, EDGE MOUNT (SOLDERLESS)

SCALE: 5:1
 SUB-DIRECTORY/OUTLINE/
 DRAWING NO. TMB-E8F2-1L1

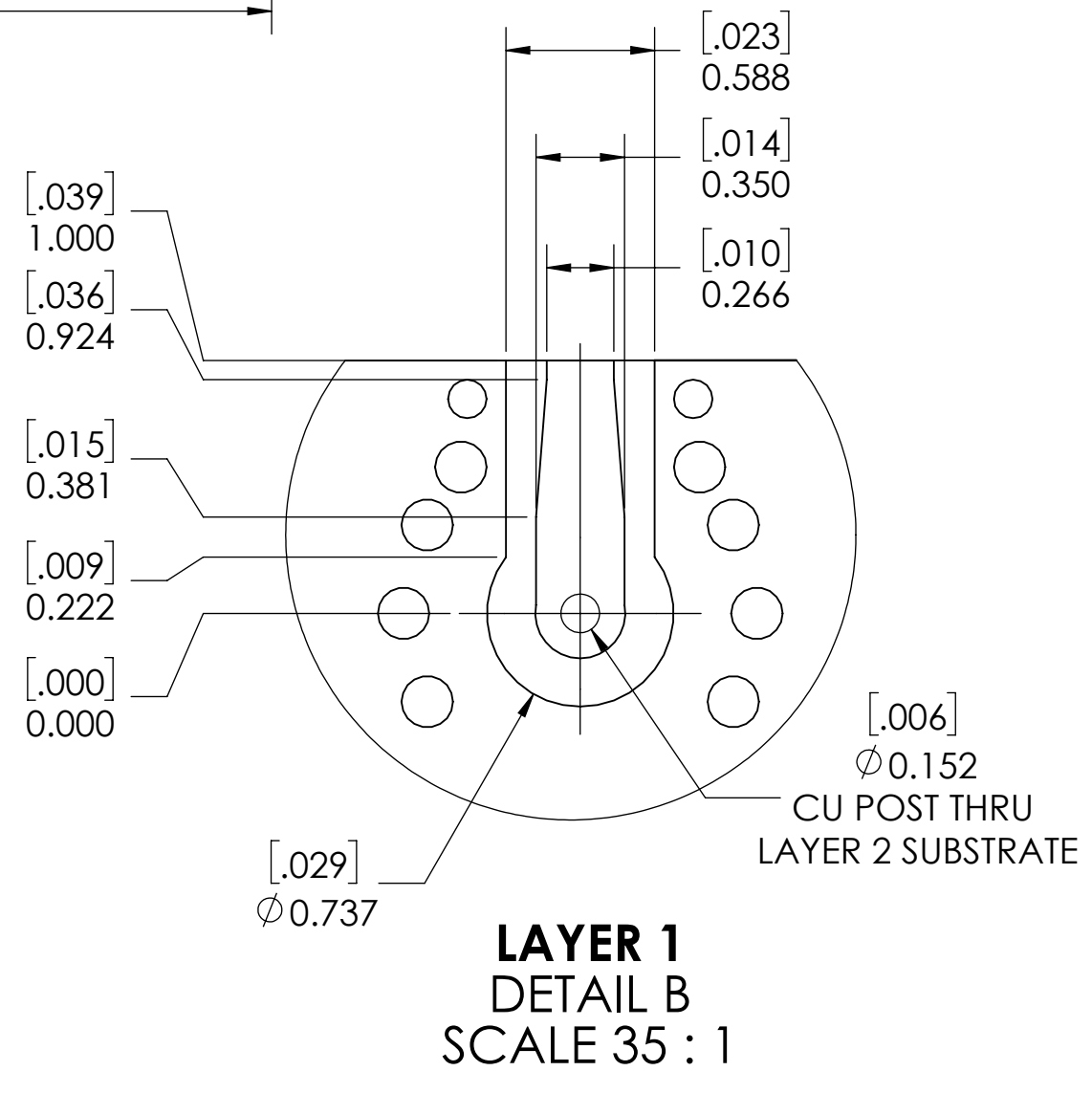
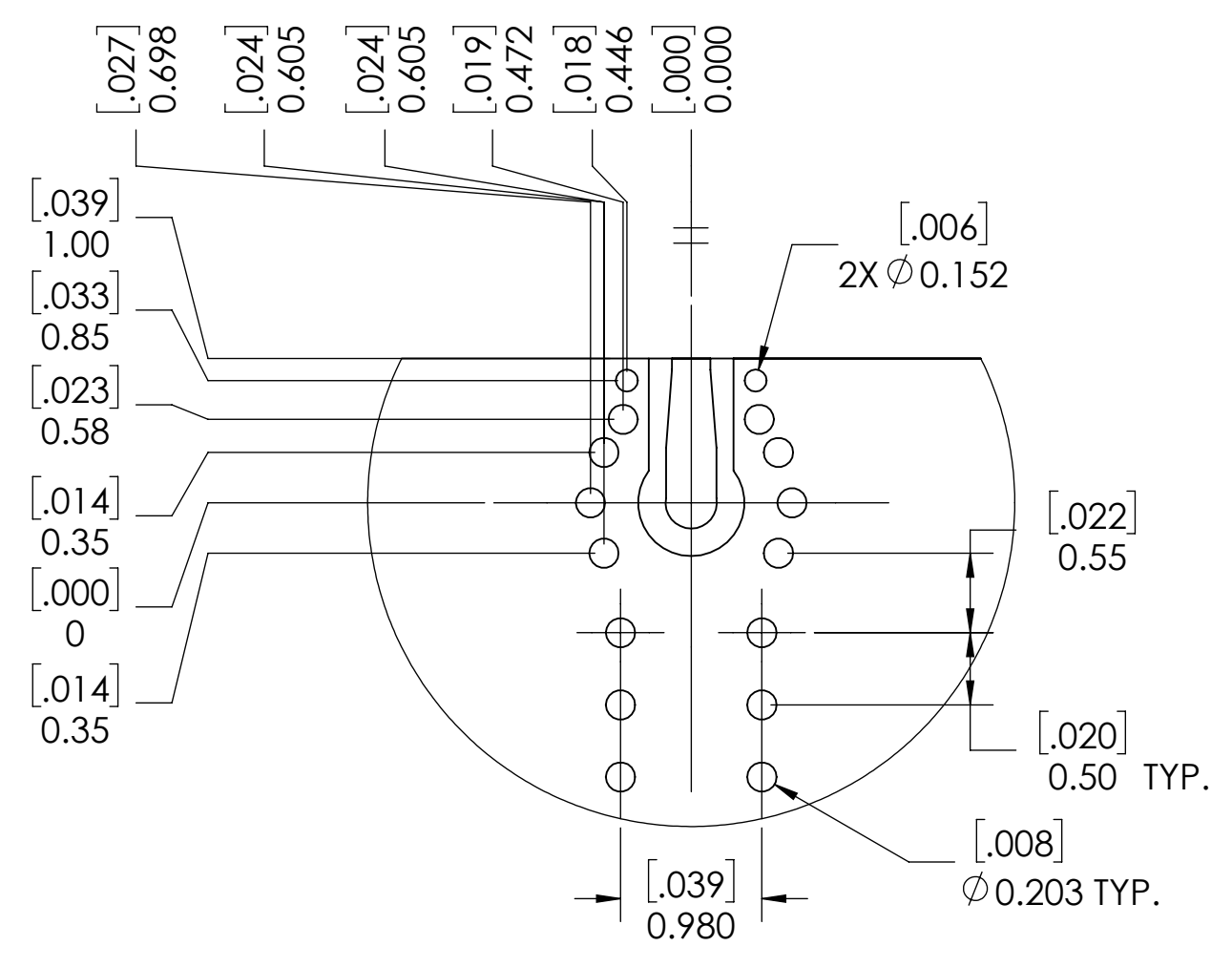
SHEET 1 OF 3
 REV. 9

4 3 2 1

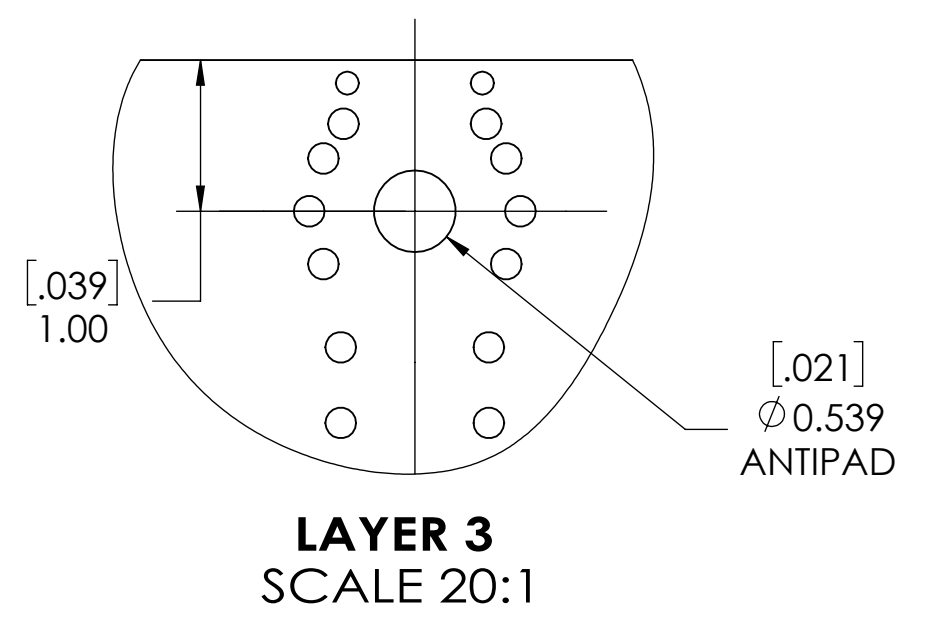
D



C

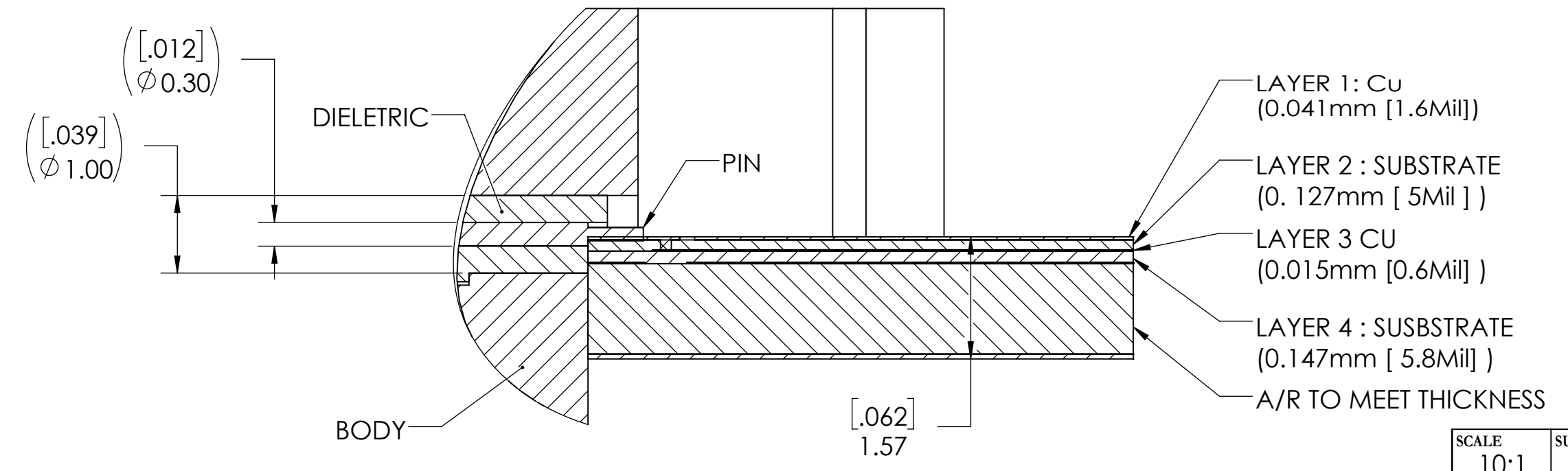


B



A

FOOTPRINT OF STRIPLINE (REF ONLY)



SCALE	SUB-DIRECTORY/	SHEET 2 OF 3
10:1		
SIZE	CAGE CODE	DRAWING NO.
C		TMB-E8F2-1L1
		REV. 9

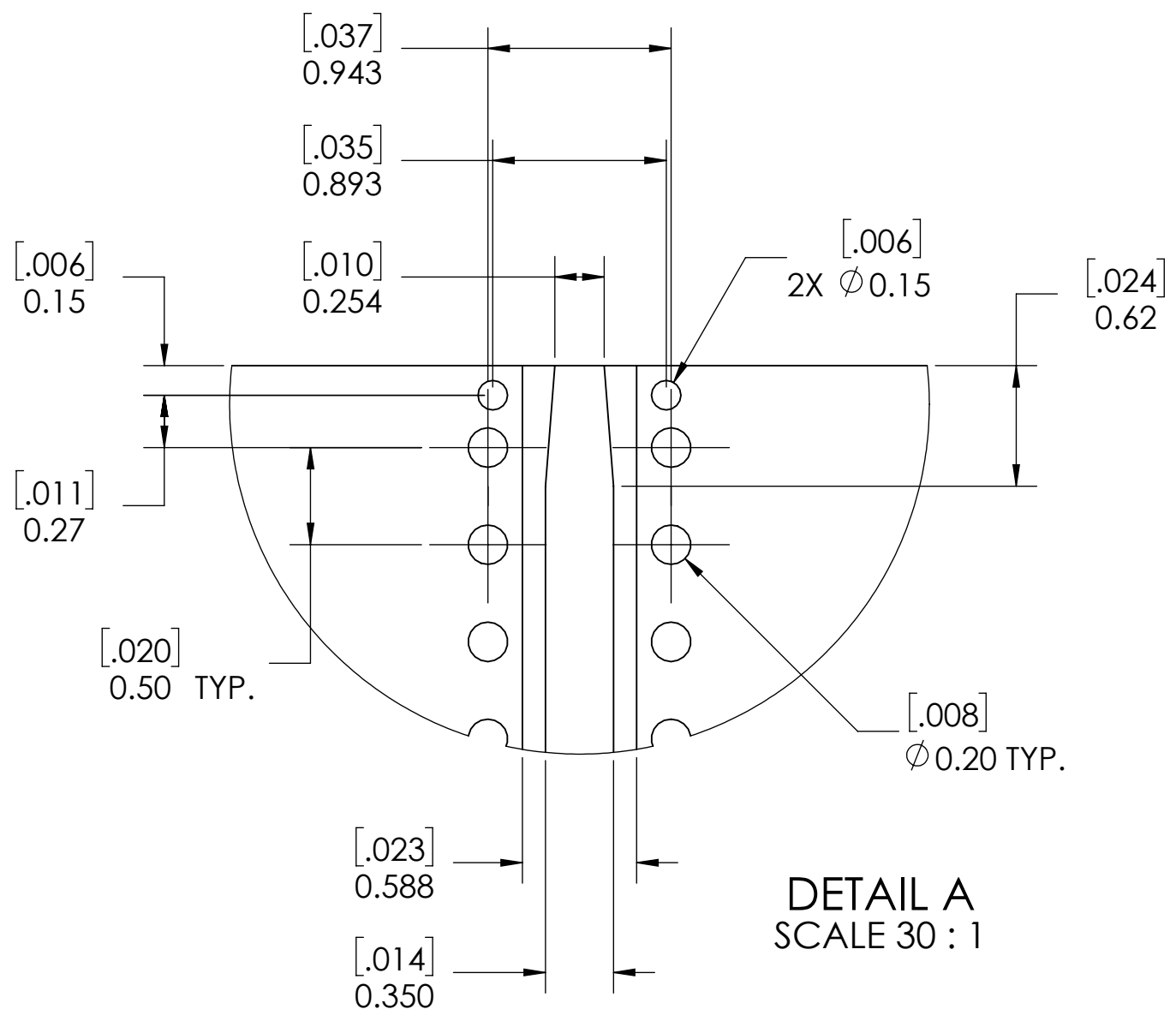
ENG-SW REV. E 4 3 2 1

4

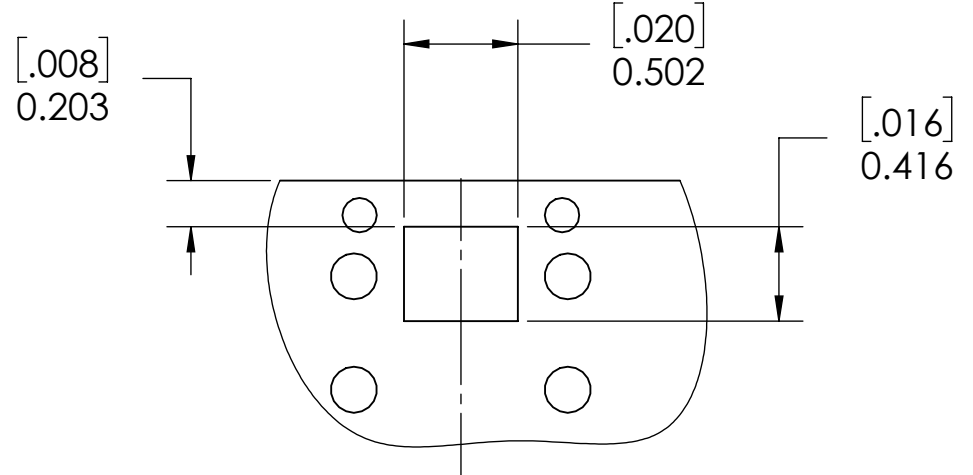
3

2

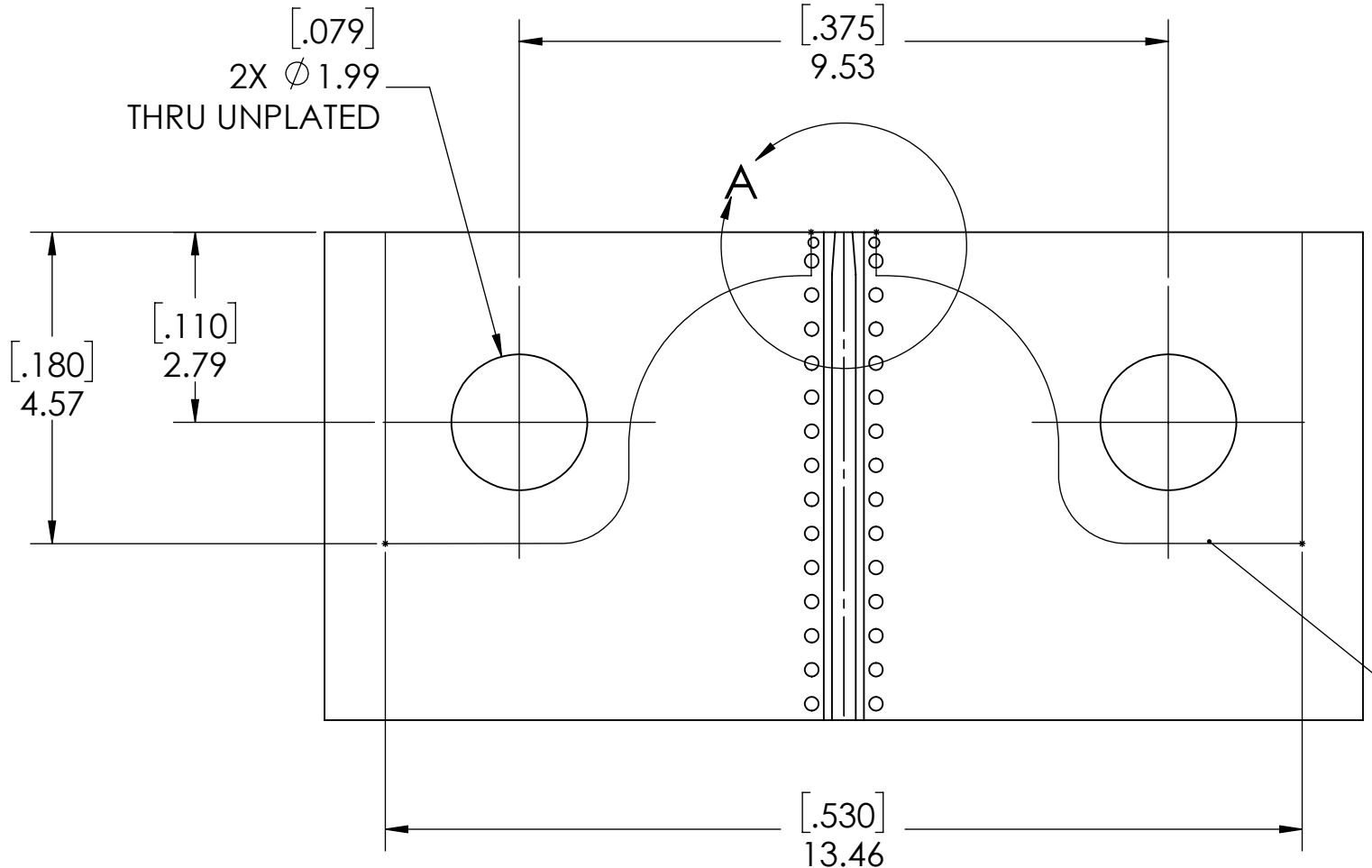
1



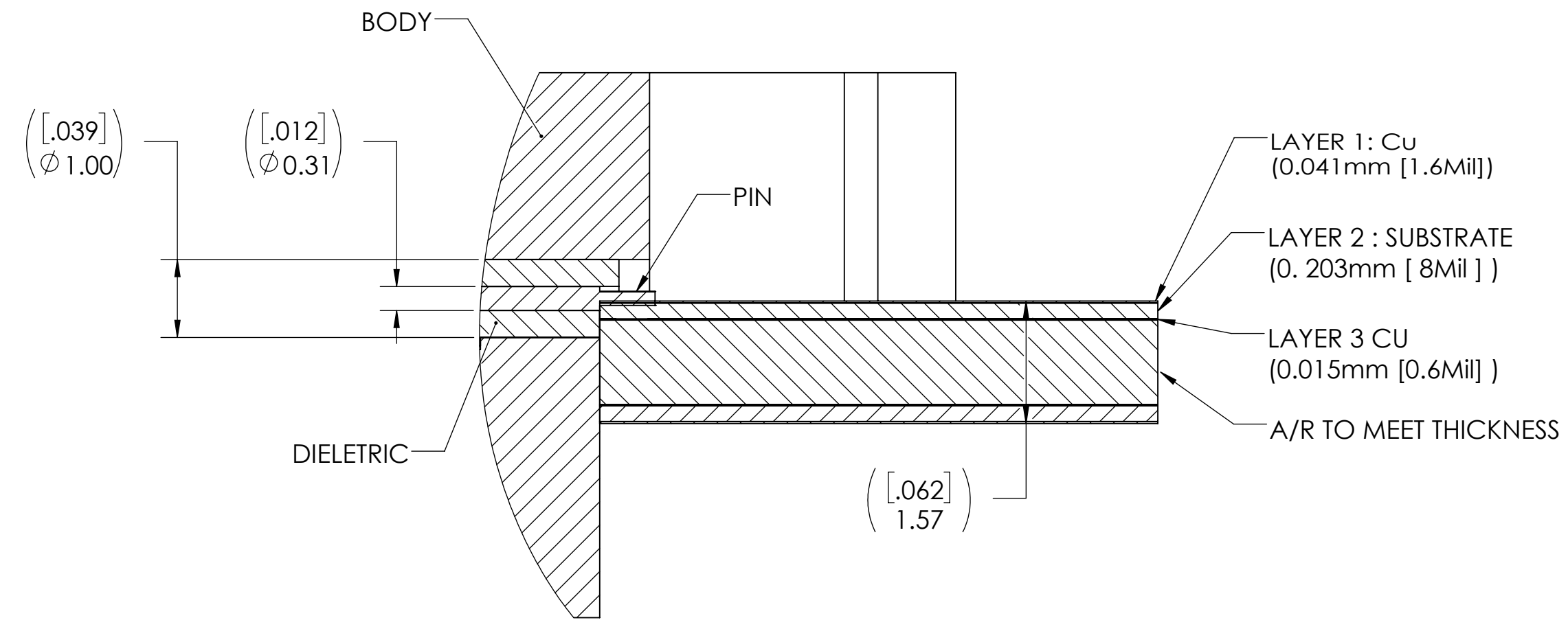
DETAIL A
SCALE 30 : 1



LAYER 3 CUTOUT



CONNECTOR OUTLINE
AND KEEP OUT AREA



FOOTPRINT OF CPW
(REF ONLY)

SCALE	SUB-DIRECTORY/	SHEET 3 OF 3
10:1		
SIZE	CAGE CODE	DRAWING NO.
C		TMB-E8F2-1L1
		REV. 9

4

3

2

1