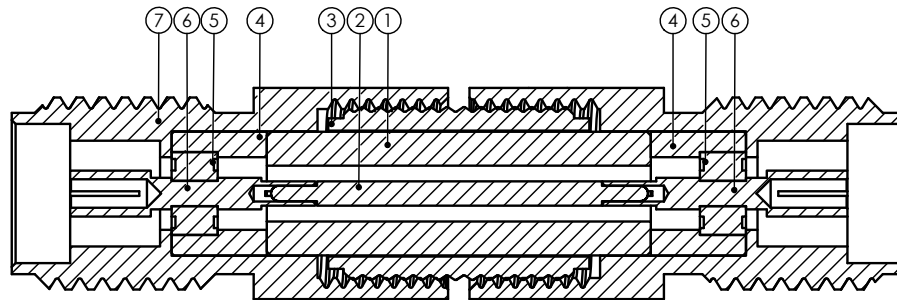
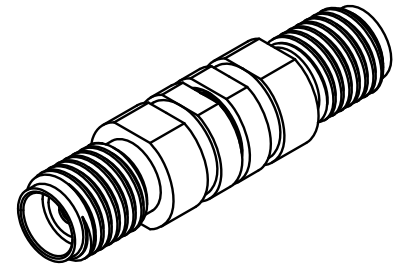
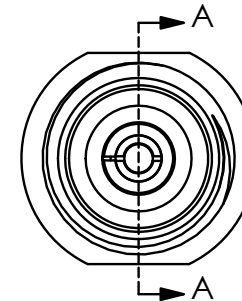


ITEM NO.	PART NUMBER	DESCRIPTION	QTY.
1	TM45-000041-00	SPACER ADAPTERS	1
2	TM45-000020-00	CENTER CONDUCTOR ADAPTERS	1
3	TM45-000080-00	PASSIVATED THREADED COUPLING	1
4	TM45-000040-00	SPACER FOR INSULATOR	2
5	TM45-000030-00	INSULATOR	2
6	TM45-05F020-00	CENTER CONDUCTOR 3.5mm FEMALE	2
7	TM45-05F010-00	PASSIVATED BODY 3.5mm FEMALE	2

REVISION			
REV.	DESCRIPTION	DATE	BY
-	INITIAL RELEASE	07/31/2019	TDR



SECTION A-A



APPLICABLE CARLISLE IT DOCUMENTS

WORK STANDARD	PROD INSTRUC	ASSY INSTRUC
NA	NA	NA
-	-	-

TOLERANCES AND NOTES

- EXCEPT AS NOTED
 DIMENSIONS ARE IN INCHES.
 LINEAR $XX \pm .015$ ANGULAR $\pm 1/2^\circ$
 FRACTION $\pm 1/32$
- MACHINE FINISH: $\sqrt{\text{RMS}}$
 - BREAK ALL SHARP EDGES .003 MAX.
 - MACHINED FILLETS .005 MAX.
 - MACHINED SURFACES SQUARE TO RESPECTIVE AXIS WITHIN .005 INCHES PER INCH.
 - MACHINED DIAMETERS CONCENTRIC WITHIN .002 TLR.
 - DIMENSIONS TO BE MET BEFORE PLATING.
 - CHAMFER ALL THREADS 45°.
 - REMOVE FRAYED EDGES ON TEFLON.
 - REMOVE ALL BURRS.

NOTICE
 THIS DRAWING EMBODIES A CONFIDENTIAL PROPRIETARY DESIGN ORIGINATED BY CARLISLE INTERCONNECT TECHNOLOGIES & ALL DESIGN, MANUFACTURING, REPRODUCTION, USE & SALE RIGHTS REGARDING THE SAME ARE EXPRESSLY RESERVED. IT IS SUBMITTED UNDER A CONFIDENTIAL RELATIONSHIP FOR A SPECIFIC PURPOSE & THE RECIPIENT AGREES BY ACCEPTING THIS DRAWING NOT TO SUPPLY OR DISCLOSE ANY INFORMATION REGARDING IT TO ANY UNAUTHORIZED PERSON TO INCORPORATE IN OTHER PROJECTS ANY SPECIAL FEATURES PECULIAR TO THIS DESIGN. ALL PATENT RIGHTS HERETO ARE EXPRESSLY RESERVED BY CARLISLE INTERCONNECT TECHNOLOGIES, KENT, WA 98032.

APPROVAL INITIALS	DATE
DRAWN BY: MTV	03.02.18
CHECKED BY: -	-
TEST ENGR: -	-
QUALITY: -	-
DESIGN ENGR: MTV	03.02.18
MFG ENGR: -	-

SIZE	CAGE CODE	DRAWING NO.	SHEET	OF	REV.
8:1	C 7M924	TMA -5FS-5FS-00	1	1	-

- NOTE(S):**
- INSTALL AND TEST PER "MW ADAPTER & CONNECTOR ASSY PROCEDURE", TM99-0008-00.
 - VSWR, MAX. 1.18:1 @ 26.5GHZ

CARLISLE Interconnect Technologies
 Kent, WA 98032

TITLE
 MW ADAPTER
 3.5mm FEMALE - 3.5mm FEMALE