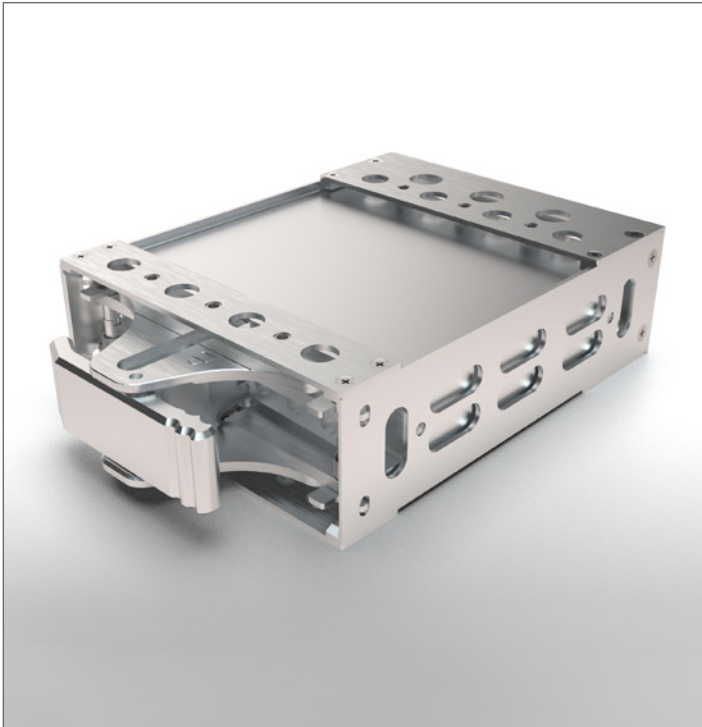


Miniature Module ARINC 836A



Miniature Module for ARINC 836A

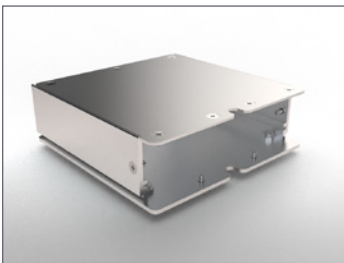
INTRODUCTION

The Miniature Module is a small form factor solution for mounting avionics. The solution enables quick and easy installation and replacement of Line Replaceable Units (LRUs) in the field. It consists of:

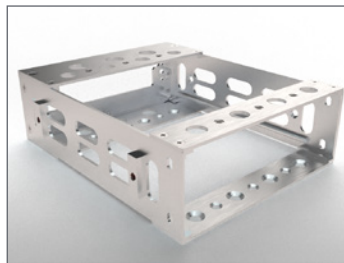
- » A tray that mounts to the aircraft
- » An enclosure to hold the electronics
- » A locking latch to allow quick and easy installation of the enclosure to the tray

Much like the ARINC 404A and ARINC 600 solutions in place today, this ARINC 836A-compliant design offers interchangeability between manufacturers and standard mounting provisions. It also:

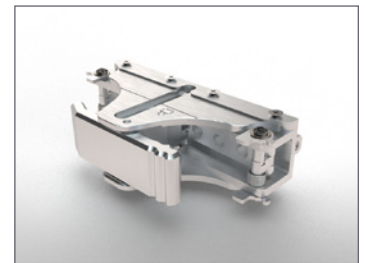
- » Increases the number of installation locations available
- » Reduces installation time
- » Reduces maintenance cycles
- » All but eliminates the need for engineering surveys compared to custom installations
- » Allows multiple units to be stacked horizontally or vertically due to its modular design
- » Is available in double-width and double-height options



Miniature Module Enclosure



Miniature Module Tray



Miniature Module Locking Latch

FEATURES	BENEFITS
Small form factor	• Easier to allocate space for installation of avionics compared to traditional solutions
Standardized to ARINC 836A	• Interchangeability across manufacturers
Compatible with Modular Racking Principle (MRP) rails	• Ease of installation
Lifecycle tested to 250 cycles	• Reliability and longevity in the field
Modular	• Multiple units can be fastened together to allow for expanded system capability